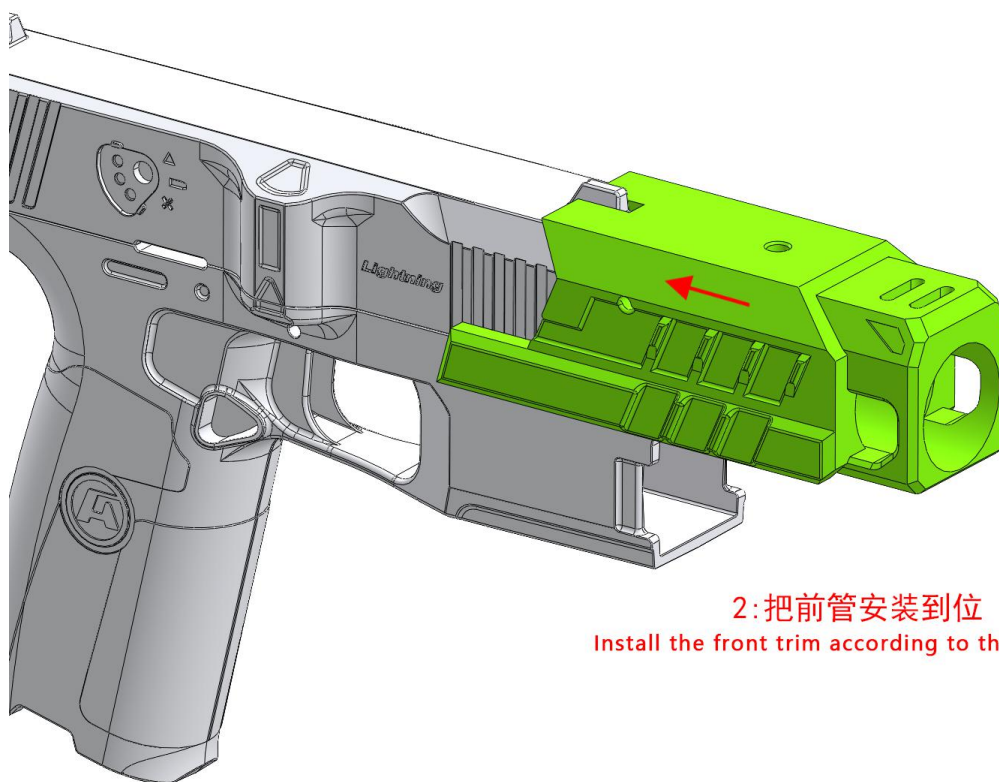
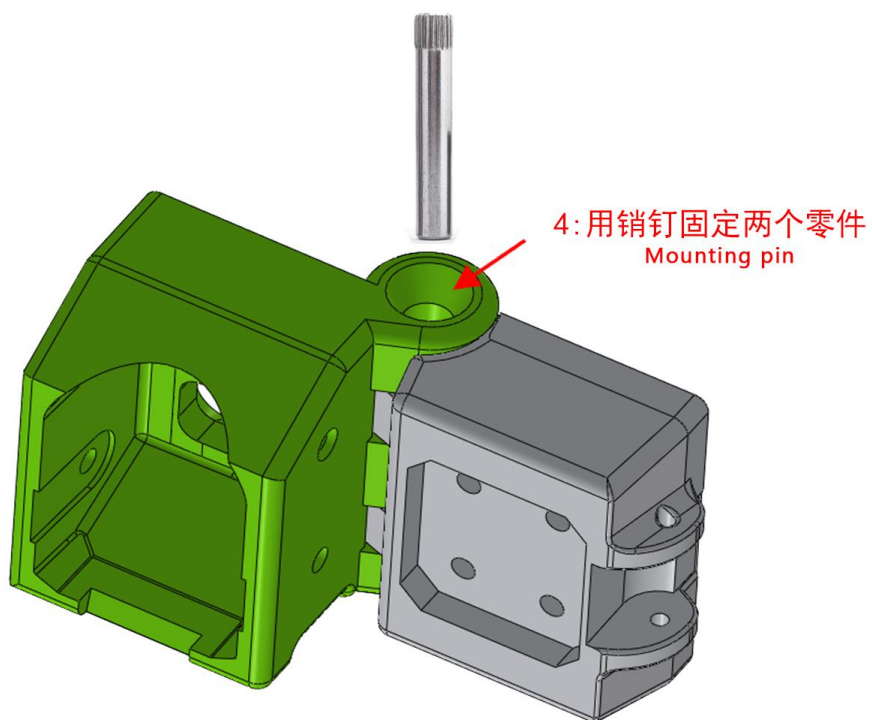
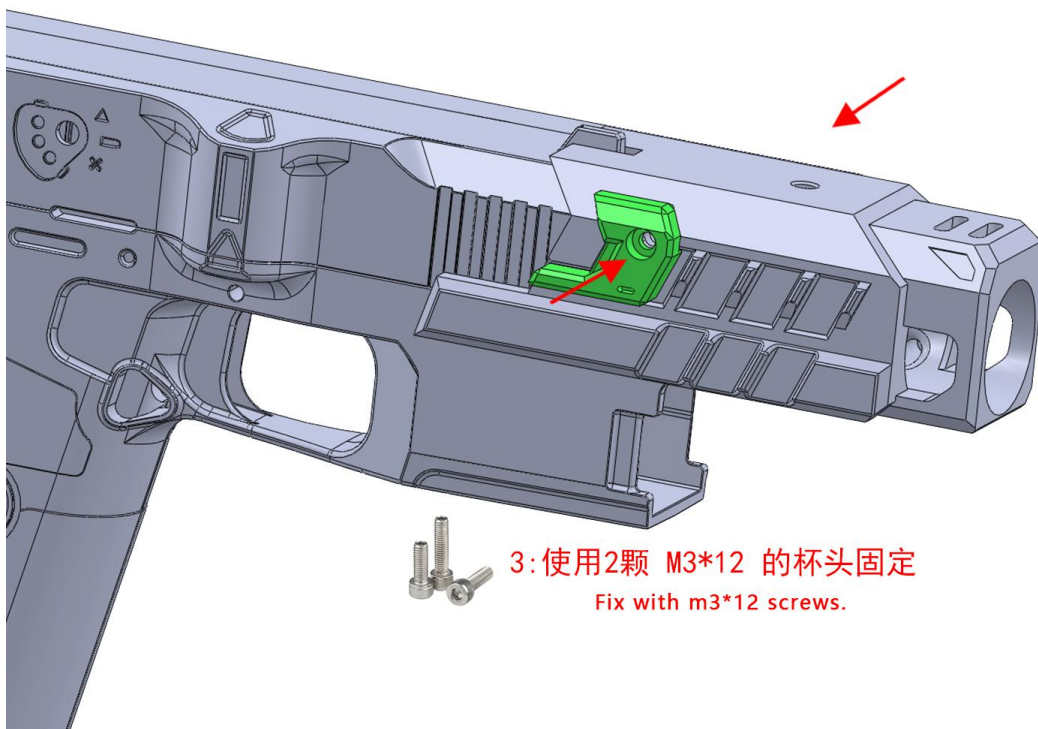
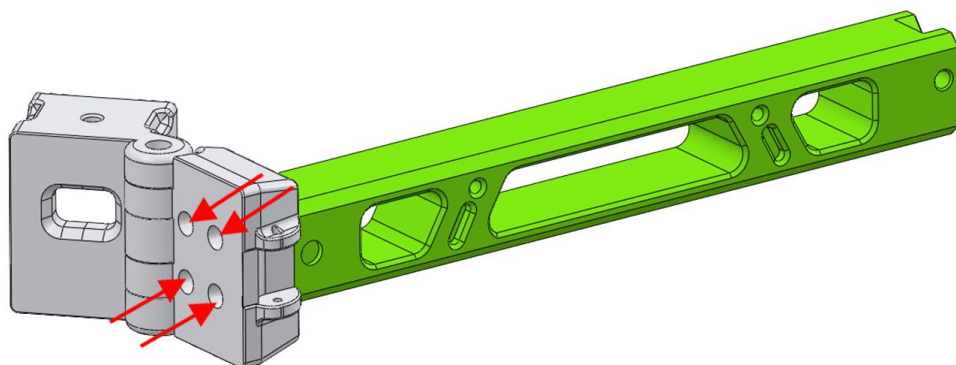


1: 把配件安装到位
Put the accessories in place



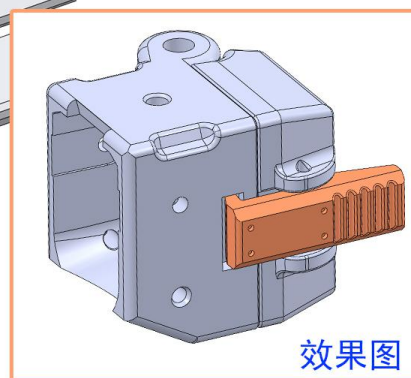
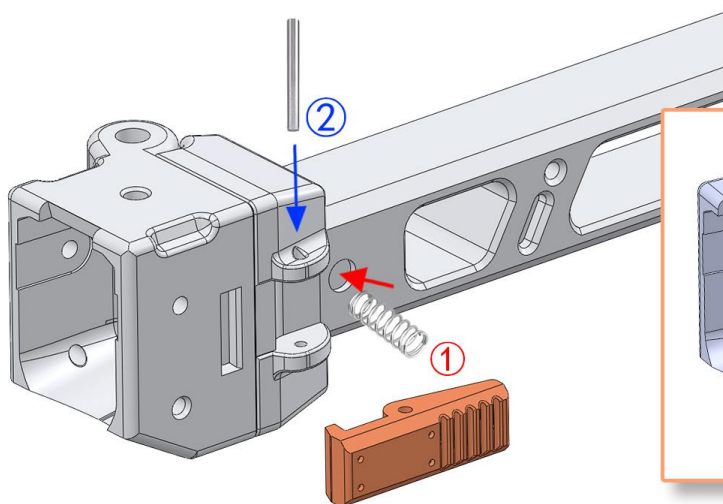
2: 把前管安装到位
Install the front trim according to the arrow.





5: 使用4颗 M3*12 的杯头固定

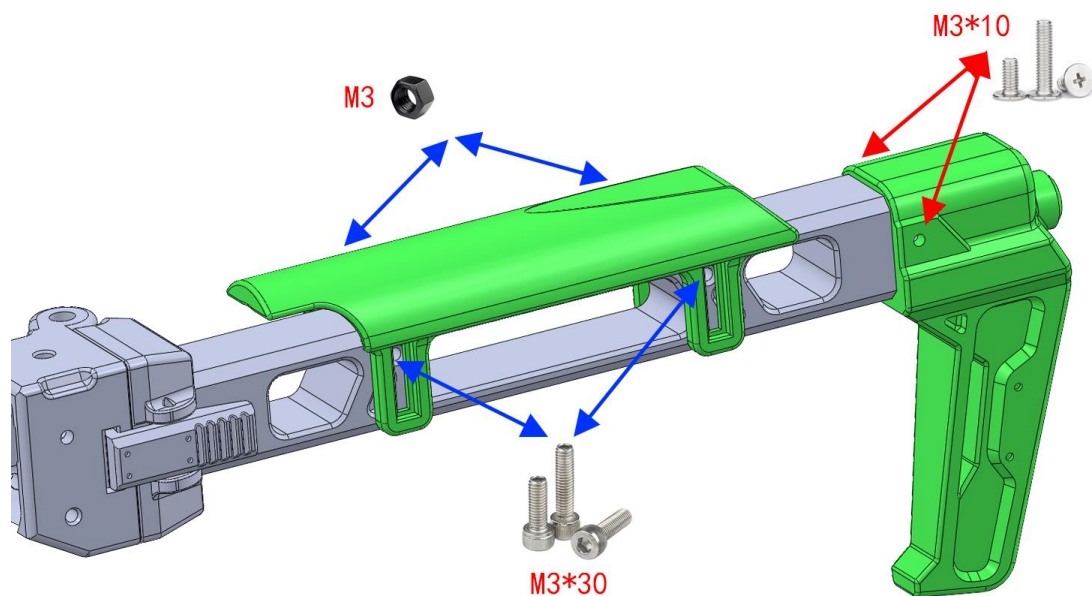
Fix with 4 m3 * 12 screws



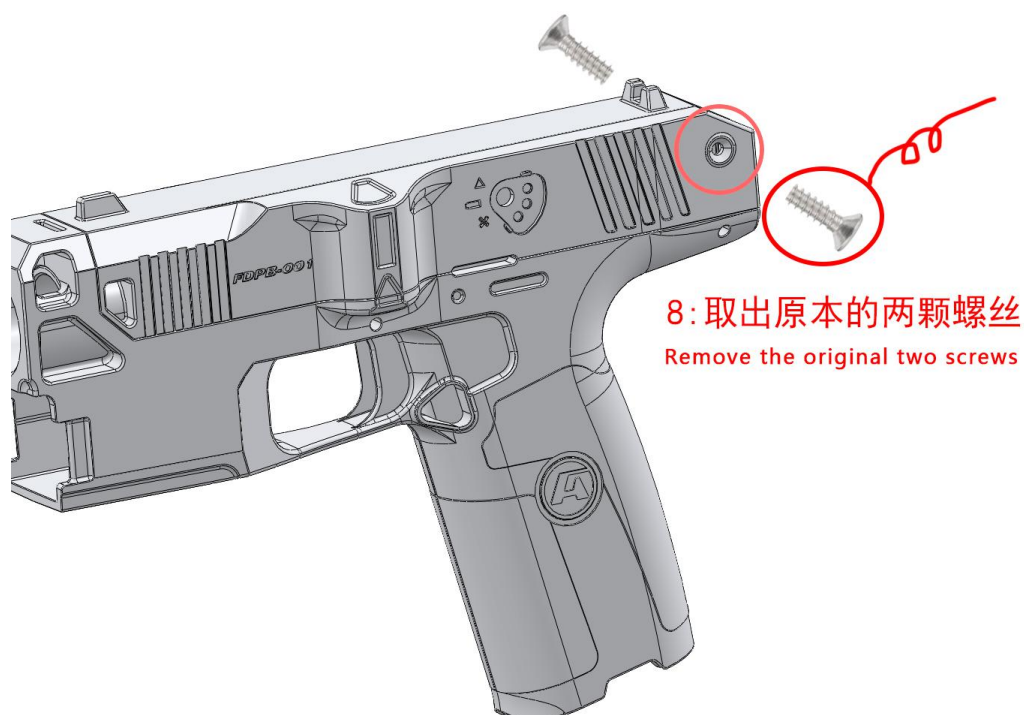
效果图

6: 先安装弹簧，再用M3*20的销钉固定

First install the spring, then fix it with an m3 * 20 pin

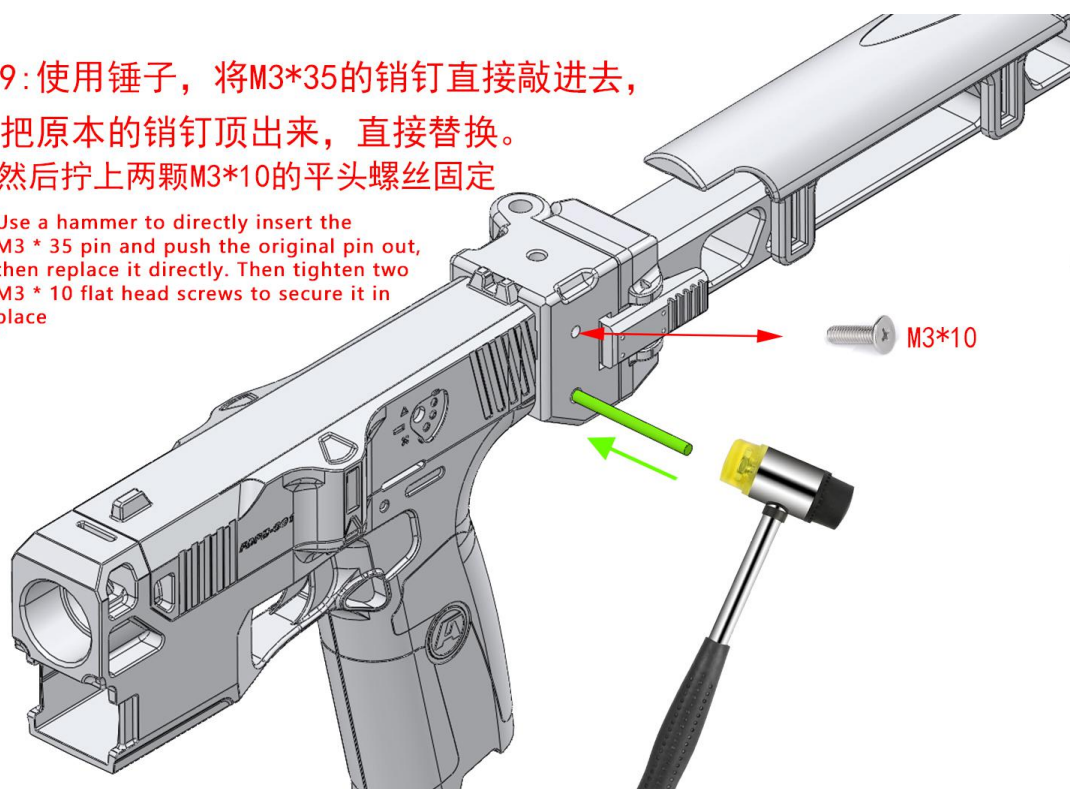


7: 安装对应螺丝固定



9:使用锤子，将M3*35的销钉直接敲进去，
把原本的销钉顶出来，直接替换。
然后拧上两颗M3*10的平头螺丝固定

Use a hammer to directly insert the
M3 * 35 pin and push the original pin out,
then replace it directly. Then tighten two
M3 * 10 flat head screws to secure it in
place



10:使用M3*8 杯头螺丝固定

Fix with m3 * 8 screws

