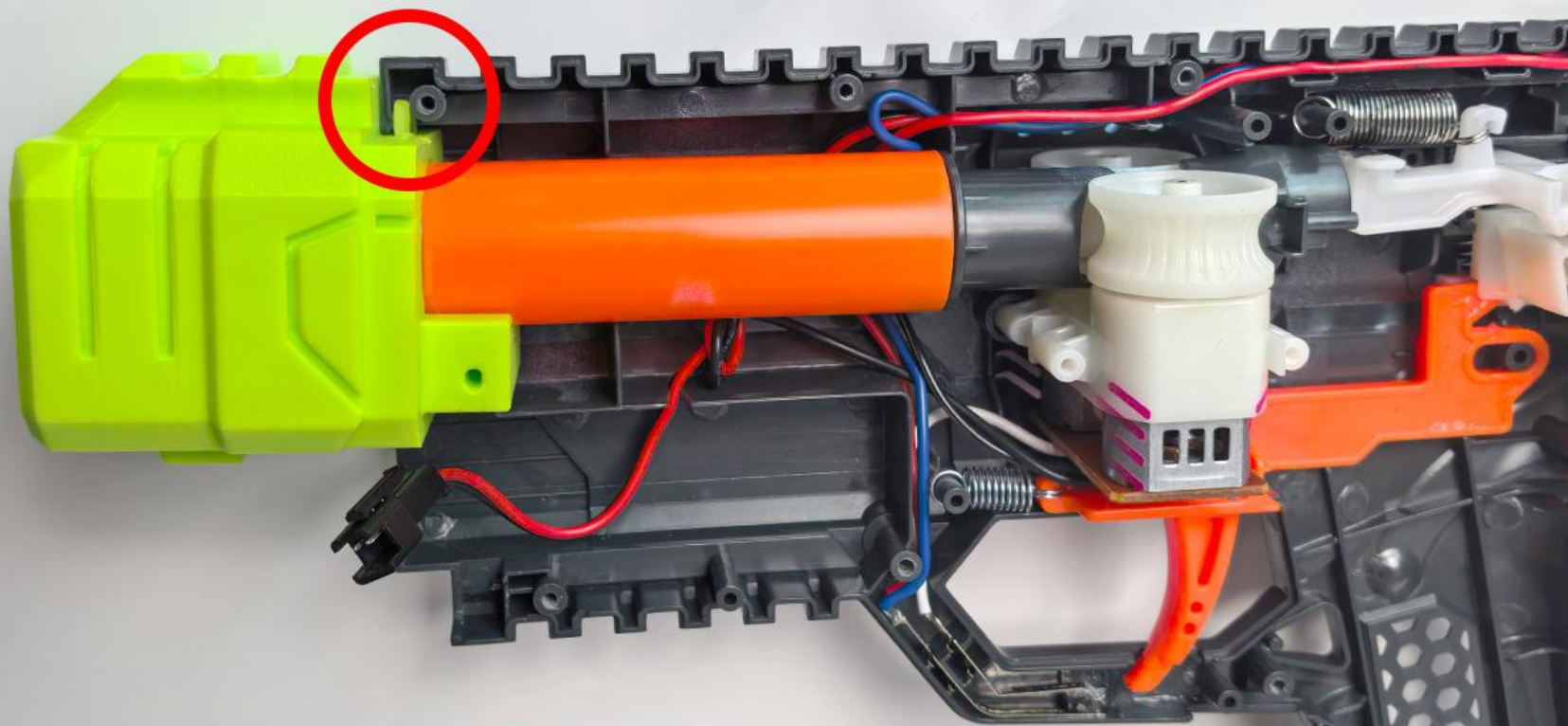




1: 取下所有螺丝，打开外壳，取下原本橙色的装饰头。

1: Remove all screws, open the shell and remove the original orange decorative head.



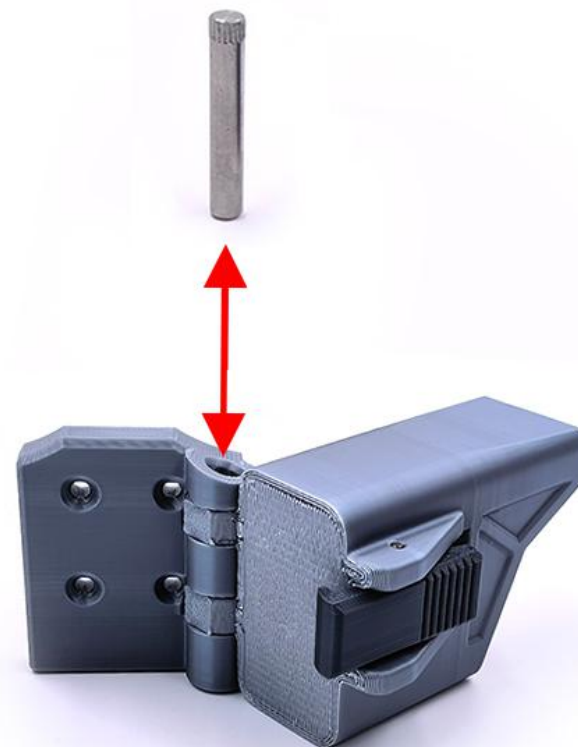
2: 安装装饰头，卡扣安装在裂缝里。

2. Install the decorative head, and the buckle is installed in the crack.



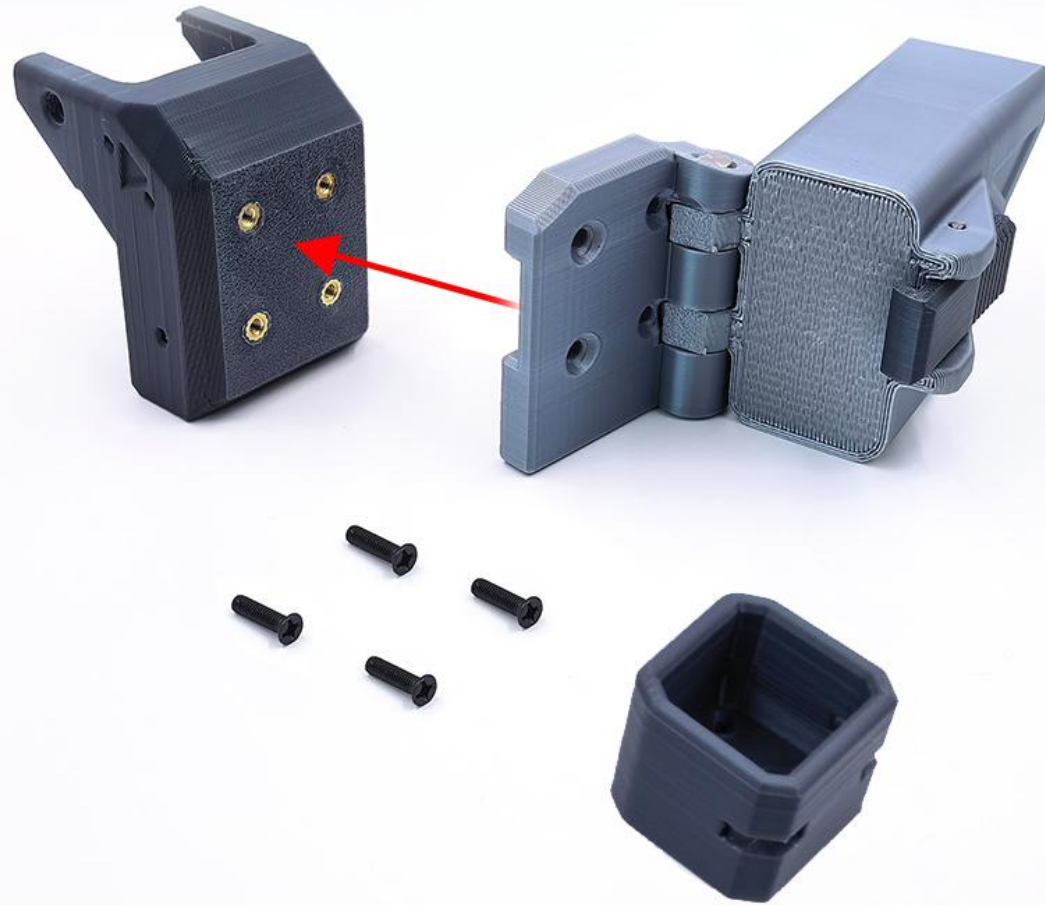
3: 合并外壳，安装上所有螺丝，剩下红色圈位置的螺丝不用安装。

3: Merge the shell, install all the screws, and do not install the screws in the red circle.



4: 先安装弹簧，然后安装插销

4: Install the spring first, and then install the bolt.



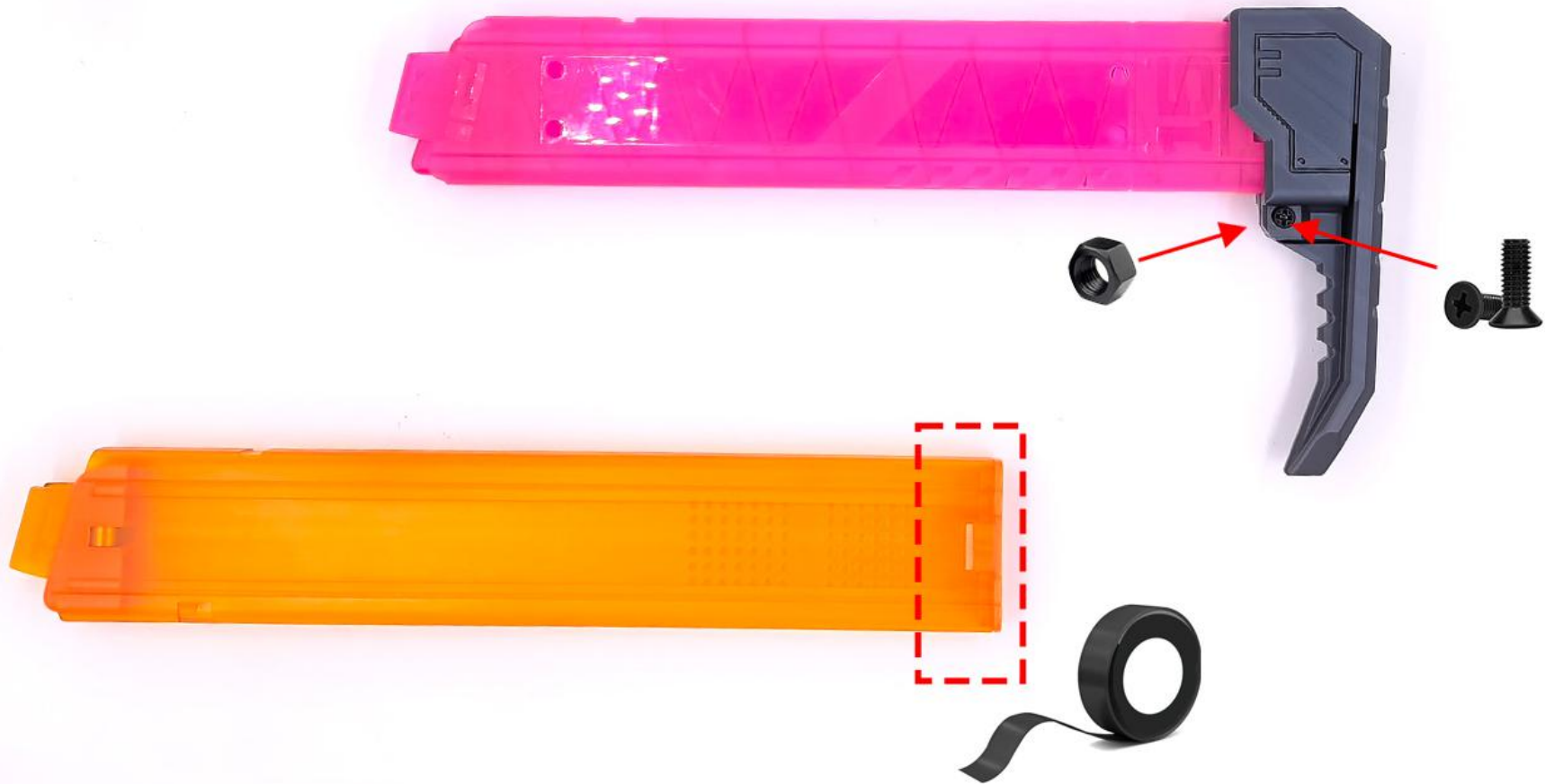
5: 使用4颗螺丝固定，后托链接2选1。

5: Use 4 screws for fixing, and choose 1 from 2 for back support links.



6: 安装顶丝和插销，与模块表面平齐就好。

6: Install the top screw and bolt, just flush with the surface of the module.



7: 后托使用螺丝螺母固定弹夹，为了兼容多款弹夹，后托插口会有扩量，松动的话可以在弹夹尾部绕几圈胶布加厚。

7. The rear bracket uses screws and nuts to fix the magazine. In order to be compatible with various magazines, the socket of the rear bracket will be expanded. If it's loose, it can be thickened by wrapping the tape around the end of the cartridge several times.